



LEVANTÉ[®]
ALUMINUM ARCHITECTURAL COMPONENTS

LEVANTÉ[®], LLC
901 NORTHVIEW ROAD
SUITE 100
WAUKESHA, WISCONSIN 53188

Project Name:

Part Name:

1 WAY POST CAP

Used on assembly:

Part No.:

LF1POSTCAP

Drawing Number:

HLM-SM-3629-000-A

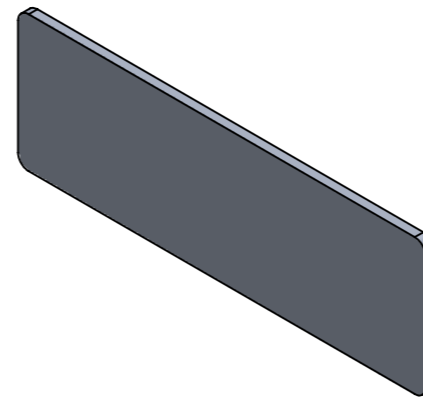
REVISIONS

REV.

DESCRIPTION

DATE

APPROVED



ISOMETRIC VIEW
SCALE 1:1

4

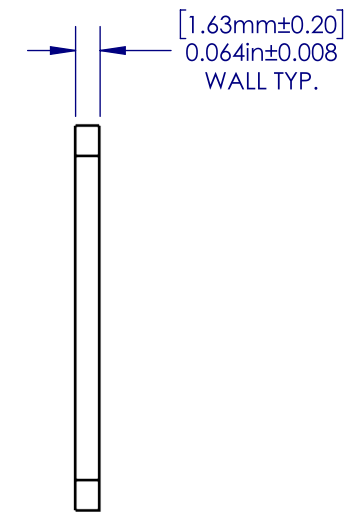
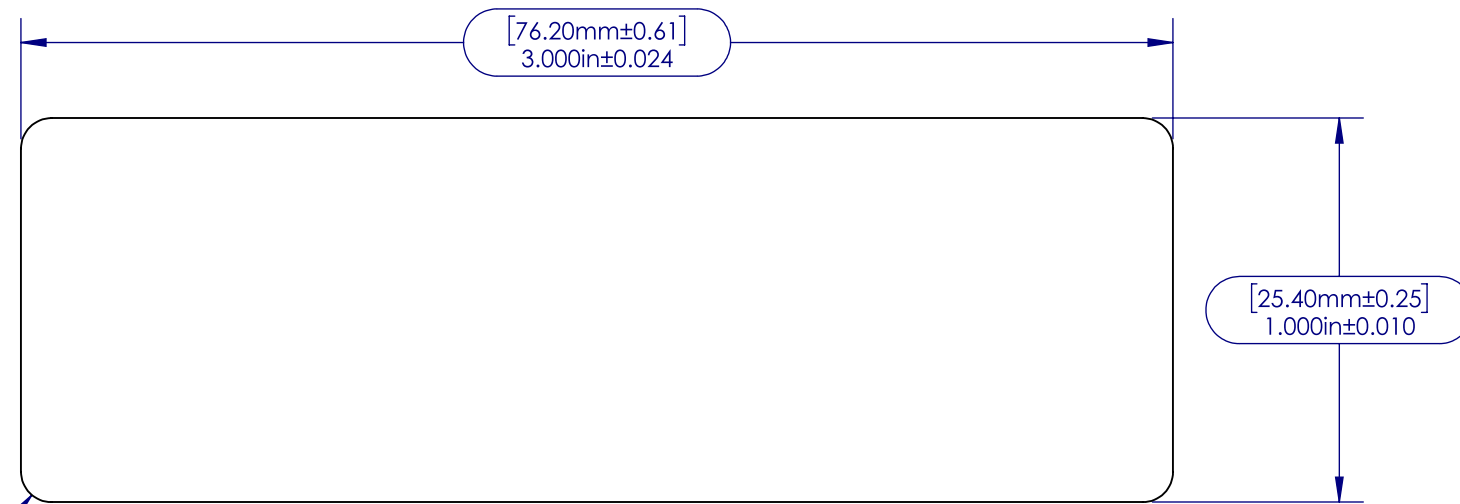
3

2

1

NOTES:

- 1. REFER TO CAD FILE FOR TOOLING
- 2. ALL RADII & FILLET RADIUS TO BE R0.079" [2.00mm] UNLESS OTHERWISE SPECIFIED
- 3. SECTIONAL MATERIAL THICKNESS 0.064" ±0.008" [1.64mm±0.20mm] UNLESS OTHERWISE SPECIFIED
- 4. CRITICAL DIMENSIONS ARE SHOWN WITHIN ()
- 5. REFERENCE DIMENSIONS ARE SHOWN WITHIN ()
- 6. ALL DIMENSIONS ARE FINISHED PART DIMENSIONS
- 7. SURFACE FINISH TO BE APPLIED ALONG ALL EDGES AND FACES
- 8. SURFACE FINISH TO BE BLACK POWDER COAT OR AS PER CUSTOMER'S PURCHASE ORDER
- 9. ALL DIMENSIONS AND TOLERANCES ARE TO BE INTERPRETED ACCORDING TO ASME Y14.



[2.01mm]
R0.079in
TYP.
(4 PLCS.)

[1.63mm±0.20]
0.064in±0.008
WALL TYP.

PROPRIETARY AND CONFIDENTIAL
THE INFORMATION CONTAINED IN THIS
DRAWING IS THE SOLE PROPERTY OF
ALWOOD LLC. ANY REPRODUCTION
IN PART OR AS A WHOLE
WITHOUT THE WRITTEN PERMISSION OF
ALWOOD LLC IS PROHIBITED.

		UNLESS OTHERWISE SPECIFIED: DIMENSIONS ARE IN INCHES [MM] TOLERANCES:		NAME	DATE
		MILLIMETERS	INCHES	DRAWN	EASS 07/03/20
		X = ±1	[.X = ± 0.1]	CHECKED	
		.X = ± .25	[.XX = ±0.01]	ENG APPR.	
		.XX = ±10	[.XXX = ±0.005]	MFG APPR.	
		ANGLES	∠ = ± 1°	Q.A.	
		FRACTIONS	X/X = ± 1/64	COMMENTS:	
		INTERPRET GEOMETRIC TOLERANCING PER:			
		MATERIAL	5052-H32		
NEXT ASSY	USED ON	FINISH	Powder Coat		
APPLICATION		DO NOT SCALE DRAWING			



TITLE:
1 Way Post Cap

SIZE	PART NO.	REV
B	LF1POSTCAP	A
SCALE: 2:1	WEIGHT: 0.019	SHEET 2 OF 2

4

3

2

1